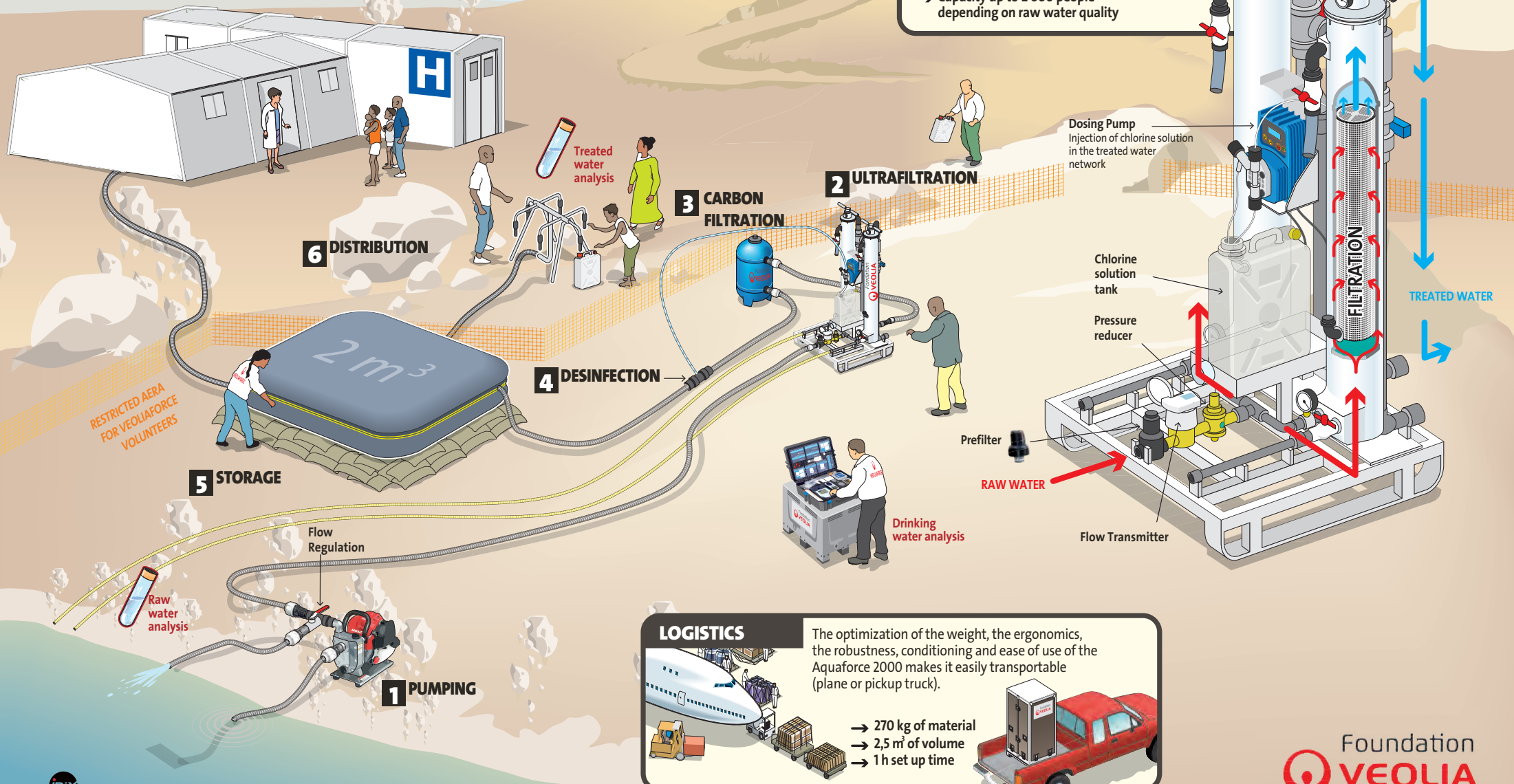


AQUAFORCE 2000

Mobile water treatment unit used in hard-to-reach areas by Veoliaforce volunteers in emergency situations. The Aquaforce 2000 enables the production of 20 litres of drinking water per person and per day* for isolated populations up to 2,000 people or in support for health facilities.

*According to WHO recommendations..



FILTRATION Example of use (2 m³/h)

Ultrafiltration membranes eliminate all suspended solids, as well as the majority of pathogenic microorganisms present in the water.

- 20 liters per capita per day
- Capacity up to 2 000 people depending on raw water quality

LOGISTICS

The optimization of the weight, the ergonomics, the robustness, conditioning and ease of use of the Aquaforce 2000 makes it easily transportable (plane or pickup truck).

- 270 kg of material
- 2,5 m³ of volume
- 1 h set up time